

NOTE:  
CONFIRM LOCATIONS OF HINGES  
OPTIONAL LOCATIONS A,B,C,OR D

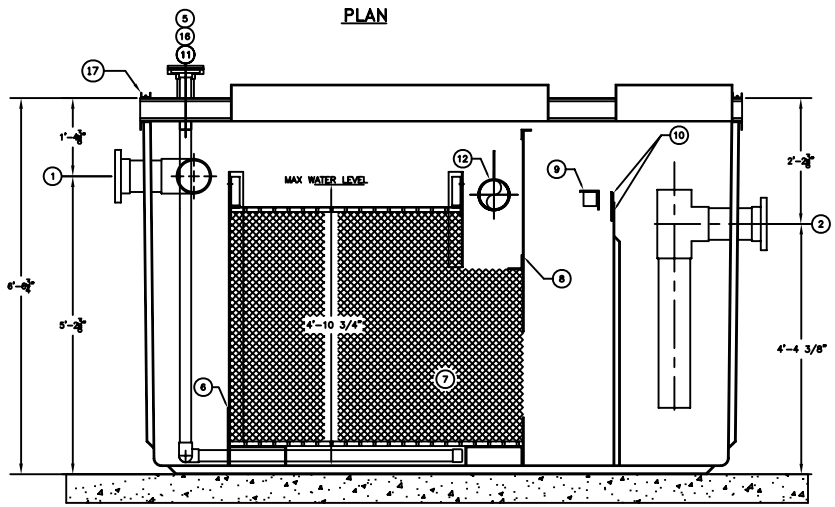
**ASSEMBLY LIST**

- ① 6" # INLET, FLANGED
- ② 6" # OUTLET, FLANGED
- ③ 6" # OIL TRANSFER PIPE
- ④A 4'-0" X 5'-6" MANWAY
- ④B 5'-0" X 2'-0" MANWAY
- ⑤ 2" # SLUDGE DRAW-OFF, FLANGED
- ⑥ INLET BAFFLE
- ⑦ VERTICAL TUBE COALESCERS
- ⑧ OIL RETENTION BAFFLE
- ⑨ SHEEN BAFFLE
- ⑩ ADJUSTABLE OUTLET WEIR
- ⑪ 2" # VENT, FLANGED
- ⑫ 6" # ROTARY PIPE SKIMMER
- ⑬ VTC-200
- ⑭ OIL STORAGE CHAMBER
- ⑮ PARTITION WALL
- ⑯ 3" # OIL DRAW OFF, FLANGED W/ BLIND FLANGE
- ⑰ HOLD DOWNS(OPTIONAL)

**NOTES**

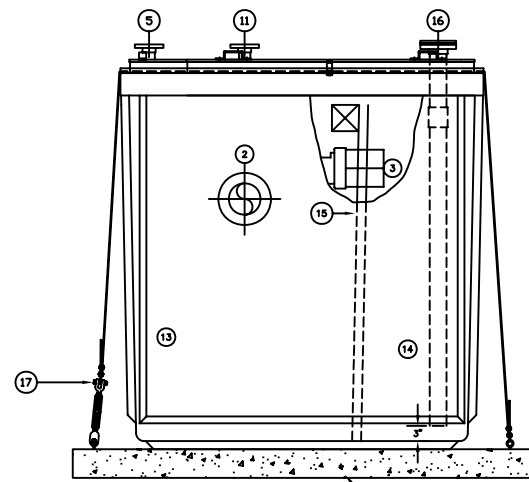
1. WITHOUT WRITTEN CONSENT FROM AFL INDUSTRIES, INC., DO NOT:
  - A. DRILL HOLES OR OTHERWISE PUNCTURE THE FIBERGLASS SKINS OF THE UNIT.
  - B. MOUNT ANY EQUIPMENT OR ACCESSORY ON THE UNIT.
  - C. REMOVE ANY EQUIPMENT OR ACCESSORY FROM THE UNIT.
  - D. FLOOD THE UNIT OR RESTRICT THE OUTFLOWS.
2. AFL REQUIRES A FLEXIBLE COUPLING TO BE INSTALLED BETWEEN THE TANK AND CUSTOMER'S CONNECTING PIPES TO ELIMINATE EXCESSIVE LOADING ON TANK FLANGES.
3. DIMENSIONAL TOLERANCE ± 1/2".
4. ALL TANK FLANGES FURNISHED BY AFL ARE 150 LB. FLAT FACE FLANGES.
5. ALL NOZZLE PROJECTIONS ARE 6" UNLESS NOTED OTHERWISE.
6. ALL FLANGE BOLT HOLE PATTERNS TO STRADDLE CENTERLINES.

**PLAN**



**SECTION "A-A"**

APPROX. UNIT WT. = 2,250 LBS.



NOTE:  
CONCRETE PAD & ANCHOR  
BOLTS NOT BY AFL

**OUTLET END  
ELEVATION**

1751 WEST 10TH STREET, RIVERA BEACH, FLA. 33404	
MODEL: NONE DATE: 6/28/07 DRAWN BY: [Signature] CHECKED BY: [Signature]	ORDER NO: TMB QUANTITY: 5204 PART NO: VTC-200F2
<b>VTC-200F2</b>	
AFL INDUSTRIES 451821 <small>REV. 10-2006 5/26/07</small>	