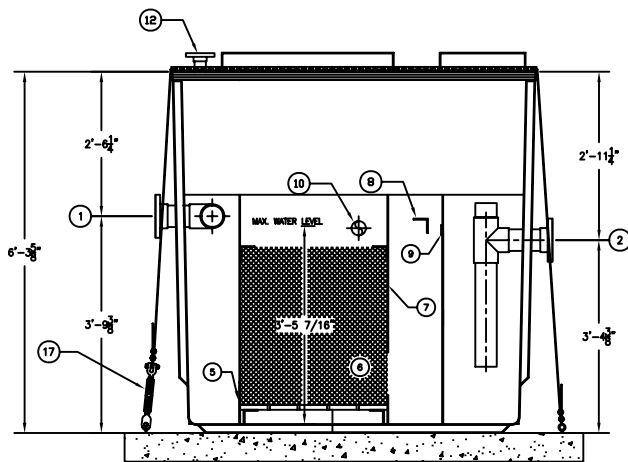


ASSEMBLY LIST

- ① 4" Ø INLET, FLANGED
- ② 4" Ø OUTLET, FLANGED
- ③ 3" Ø OIL TRANSFER PIPE
- ④ 5'-0" x 3'-0" MANWAY
- ④B 5'-0" x 1'-6" MANWAY
- ④C 4'-0" x 1'-6" MANWAY
- ⑤ INLET BAFFLE
- ⑥ VERTICAL TUBE COALESCERS
- ⑦ OIL RETENTION BAFFLE
- ⑧ SHEEN BAFFLE
- ⑨ ADJUSTABLE OUTLET WEIR
- ⑩ ROTARY PIPE SKIMMER
- ⑪ 1 1/2" Ø SLUDGE DRAW OFF, PUMP SUCTION
- ⑫ 2" Ø VENT, FLANGED
- ⑬ VTC-50
- ⑭ OIL STORAGE CHAMBER
- ⑮ PARTITION WALL
- ⑯ 3" Ø OIL DRAW OFF, FLG. W/ BLIND FLG.
- ⑰ HOLD DOWNS(OPTIONAL)

NOTES

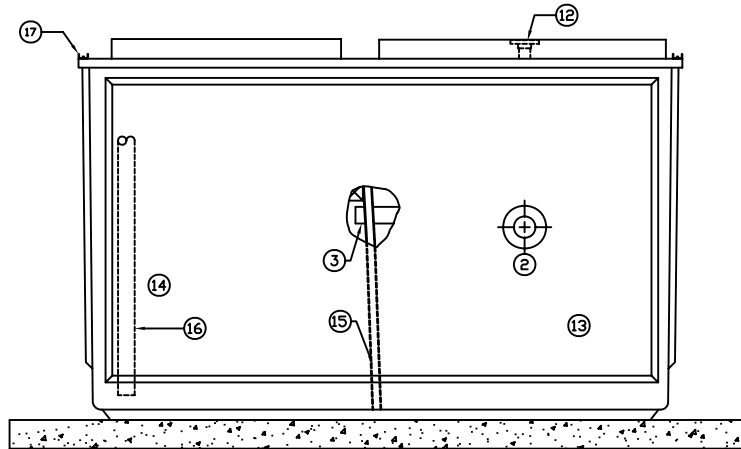
1. WITHOUT WRITTEN CONSENT FROM AFL INDUSTRIES, INC., DO NOT:
 - A. DRILL HOLES OR OTHERWISE PUNCTURE THE FIBERGLASS SKINS OF THE UNIT.
 - B. MOUNT ANY EQUIPMENT OR ACCESSORY ON THE UNIT.
 - C. REMOVE ANY EQUIPMENT OR ACCESSORY FROM THE UNIT.
 - D. FLOOD THE UNIT OR RESTRICT THE OUTFLOWS.
2. AFL REQUIRES A FLEXIBLE COUPLING TO BE INSTALLED BETWEEN THE TANK AND CUSTOMER'S CONNECTING PIPES TO ELIMINATE EXCESSIVE LOADING ON TANK FLANGES.
3. DIMENSIONAL TOLERANCE ± 1/2".
4. ALL TANK FLANGES FURNISHED BY AFL ARE 150 LB. FLAT FACE FLANGES.
5. ALL NOZZLE PROJECTIONS ARE 4" UNLESS NOTED OTHERWISE.
6. ALL FLANGE BOLT HOLE PATTERNS TO STRADDLE CENTERLINES.




SECTION "A-A"

NOTE: CONCRETE PAD & ANCHOR BOLTS NOT BY AFL.

APPROX. UNIT WT. = 2,225 LBS.



OUTLET END ELEVATION

 AFL INDUSTRIES, INC. 1751 WEST 10TH STREET, RIVIERA BEACH, FLA. 33404		
MODEL: NONE	REV. NUMBER AND SPECIFICATIONS: NONE	DRAWN BY: TMB
DATE: 6/26/07	DATE OF FIELD INSTALLATION: NONE	CHECKED BY:
MODEL: VTC-50F4	AFL JOB NO.: 5204	
AFL INDUSTRIES		DRAWING NO.: 4S1817
FILE NO.-009 6/26/07		