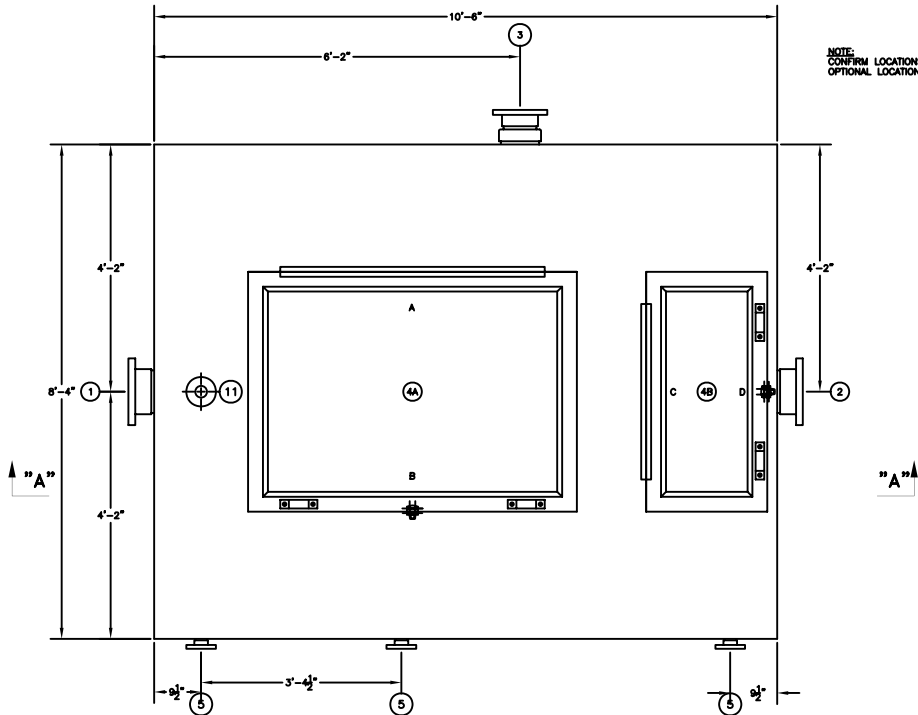


NOTE:
CONFIRM LOCATIONS OF HINGES
OPTIONAL LOCATIONS A,B,C,OR D



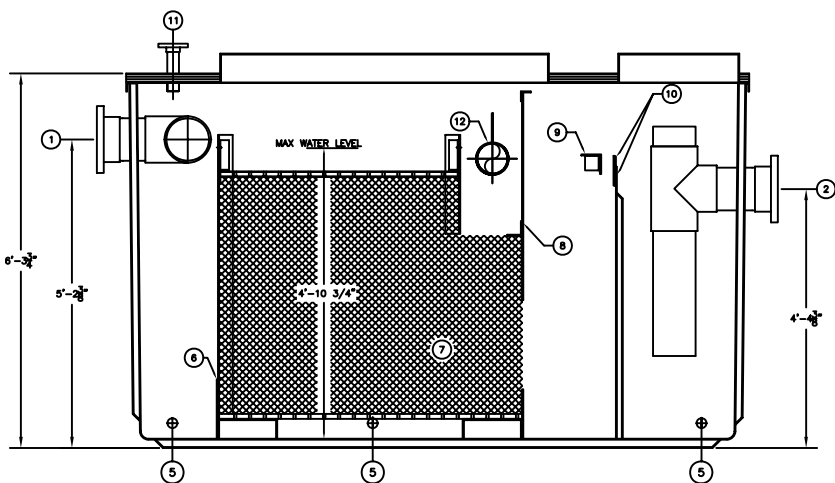
PLAN

ASSEMBLY LIST

- ① 8" # INLET, FLANGED
- ② 8" # OUTLET, FLANGED
- ③ 6" # OIL OUTLET, FLANGED
- ④A 4'-0" X 5'-6" MANWAY
- ④B 2'-0" X 4'-0" MANWAY
- ⑤ 2" # DRAIN, FLANGED (3 REQ'D.)
- ⑥ INLET BAFFLE
- ⑦ VERTICAL TUBE COALESCERS
- ⑧ OIL RETENTION BAFFLE
- ⑨ SHEEN BAFFLE
- ⑩ ADJUSTABLE OUTLET WEIR
- ⑪ 2" # VENT, FLANGED
- ⑫ 6" # ROTARY PIPE SKIMMER

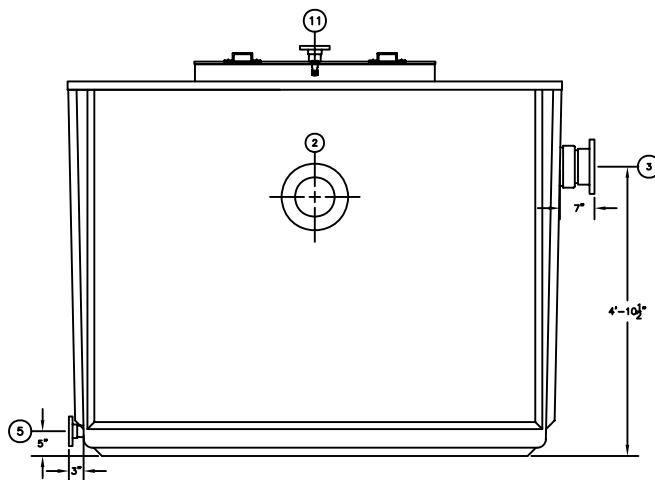
NOTES

1. WITHOUT WRITTEN CONSENT FROM AFL INDUSTRIES, INC., DO NOT:
 - A. DRILL HOLES OR OTHERWISE PUNCTURE THE FIBERGLASS SKINS OF THE UNIT.
 - B. MOUNT ANY EQUIPMENT OR ACCESSORY ON THE UNIT.
 - C. REMOVE ANY EQUIPMENT OR ACCESSORY FROM THE UNIT.
 - D. FLOOD THE UNIT OR RESTRICT THE OUTFLOWS.
2. AFL REQUIRES A FLEXIBLE COUPLING TO BE INSTALLED BETWEEN THE TANK AND CUSTOMER'S CONNECTING PIPES TO ELIMINATE EXCESSIVE LOADING ON TANK FLANGES.
3. DIMENSIONAL TOLERANCE $\pm 1/2"$.
4. ALL TANK FLANGES FURNISHED BY AFL ARE 150 LB. FLAT FACE FLANGES.
5. ALL NOZZLE PROJECTIONS ARE 6" UNLESS NOTED OTHERWISE.
6. ALL FLANGE BOLT HOLE PATTERNS TO STRADDLE CENTERLINES.



SECTION "A-A"

APPROX. UNIT WT. = 2,500 LBS.



OUTLET END
ELEVATION

| | | |
|--|--|---|
| | | |
| AFL INDUSTRIES, INC. 1751 WEST 10TH STREET, MIAMI BEACH, FLA. 33404 | | |
| MODEL: NONE DATE: 6/26/07 | BY: [Signature] CHECKED BY: [Signature] | DRAWN BY: TMB DATE: 6/26/07 |
| VTC-400A | | 5204 |
| AFL INDUSTRIES | | 4S1828 <small>REV. 100-000 05/07</small> |