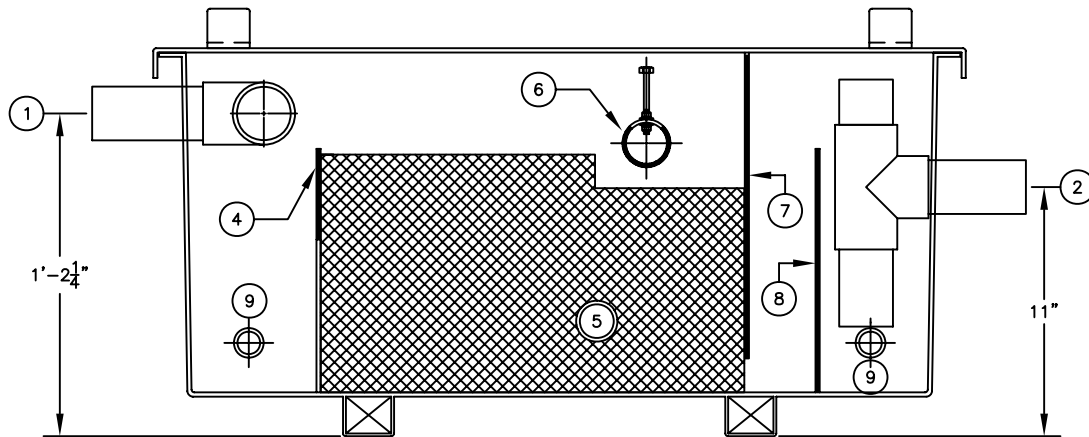


PLAN



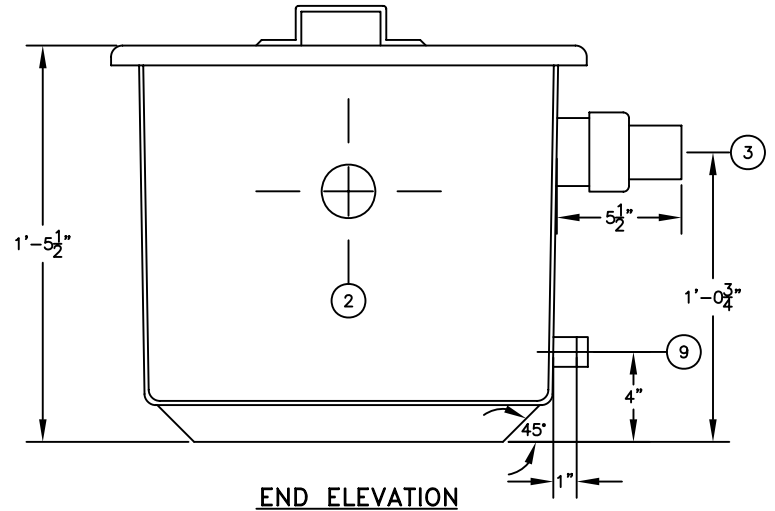
SECTION "A-A"

ASSEMBLY LIST

- ① 2" ϕ INLET, PIPE STUB
- ② 2" ϕ OUTLET, PIPE STUB
- ③ 2" ϕ OIL OUTLET, PIPE STUB
- ④ INLET BAFFLE
- ⑤ VERTICAL TUBE COALESCERS
- ⑥ 2" ϕ ROTARY PIPE SKIMMER
- ⑦ OIL RETENTION BAFFLE
- ⑧ OUTLET WEIR
- ⑨ 1" ϕ DRAIN W\PLUG (2 REQ'D.)

NOTES

1. WITHOUT WRITTEN CONSENT FROM AFL INDUSTRIES, INC., DO NOT:
 - A. DRILL HOLES OR OTHERWISE PUNCTURE THE FIBERGLASS SKINS OF THE UNIT.
 - B. MOUNT ANY EQUIPMENT OR ACCESSORY ON THE UNIT.
 - C. REMOVE ANY EQUIPMENT OR ACCESSORY FROM THE UNIT.
 - D. FLOOD THE UNIT OR RESTRICT THE OUTFLOWS.
2. AFL REQUIRES A FLEXIBLE CONNECTION TO BE INSTALLED BETWEEN THE TANK AND CUSTOMER'S CONNECTING PIPES TO ELIMINATE EXCESSIVE LOADING ON TANK FLANGES.
3. DIMENSIONAL TOLERANCE $\pm 1/2"$.
4. ALL TANK FLANGES FURNISHED BY AFL ARE 150# FLAT FACE FLANGES.
5. ALL NOZZLE PROJECTIONS ARE 4" UNLESS NOTED OTHERWISE.
6. ALL FLANGE BOLT HOLE PATTERNS STRADDLE CENTERLINES.
7. TANK IS FITTED WITH SCH 40 PVC PIPE.



END ELEVATION

APPROX. WT. = 70 LBS.

 AFL INDUSTRIES, INC. 1751 WEST 10TH STREET, RIVIERA BEACH, FLA. 33404		
SCALE: NONE	<small>THIS DRAWING AND SPECIFICATIONS IS THE PROPERTY OF AFL INDUSTRIES, 1751 WEST 10TH STREET, RIVIERA BEACH, FLA. 33404 AND SHALL NOT BE REPRODUCED WITHOUT WRITTEN PERMISSION.</small>	DRAWN BY: TMB
DATE: 6/26/07		CHECKED BY:
MODEL: VTC-5 SEPARATOR W/O FLANGES		AFL JOB No. 5204
JOB: AFL INDUSTRIES	DRAWING No. 3S2581	FILE: VTC-5 3=12 6/26/07